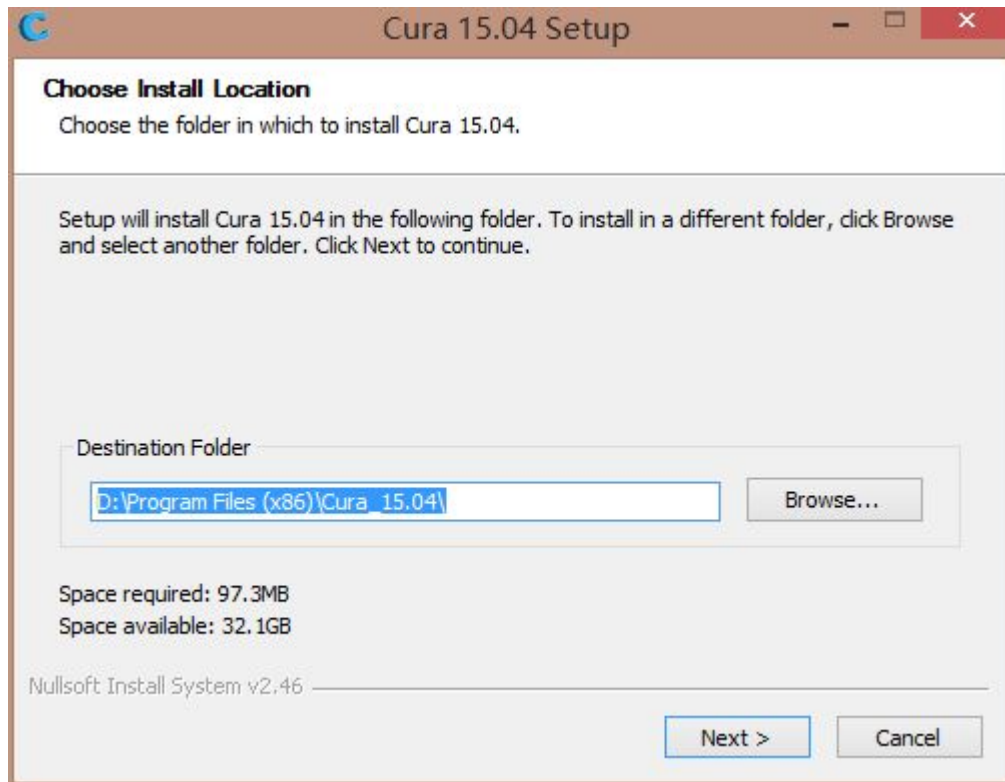
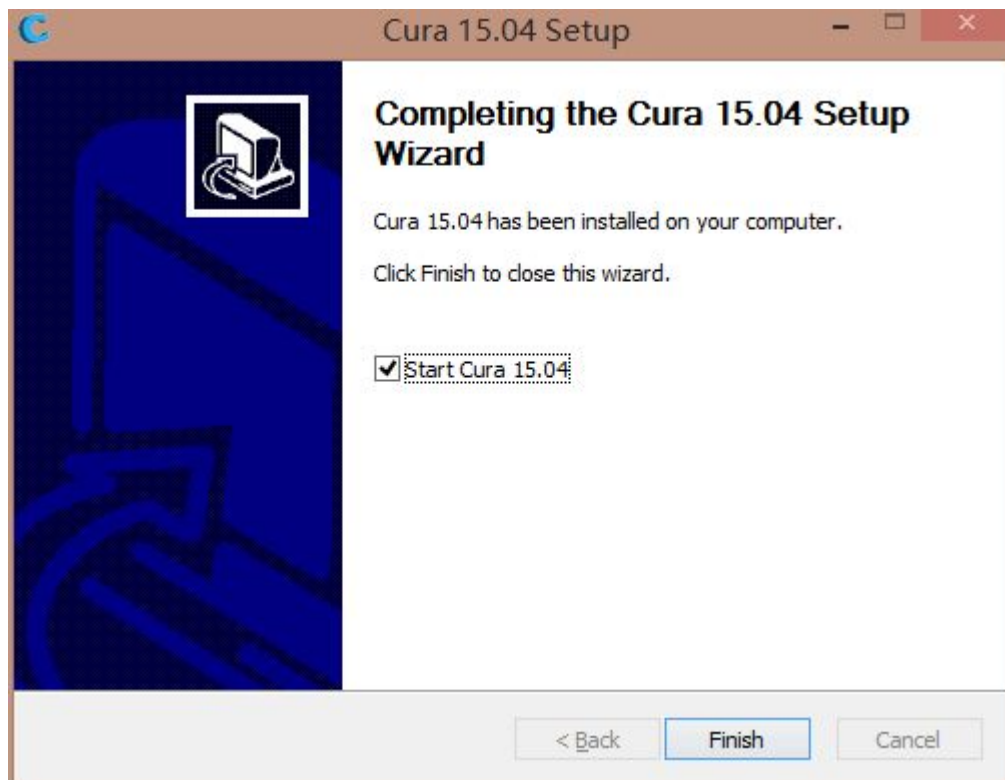


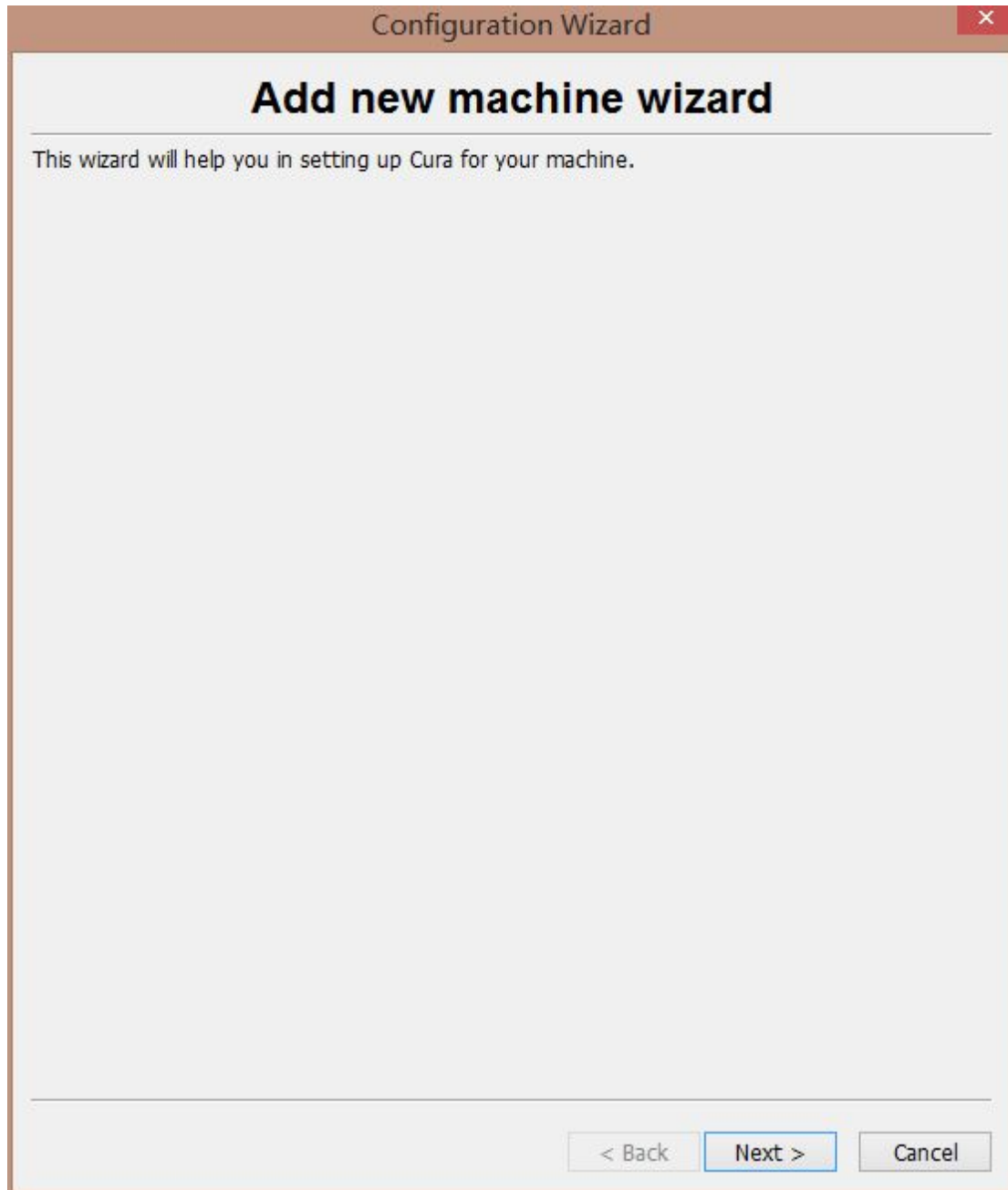
## 1. 双击 Cura15.04 安装软件



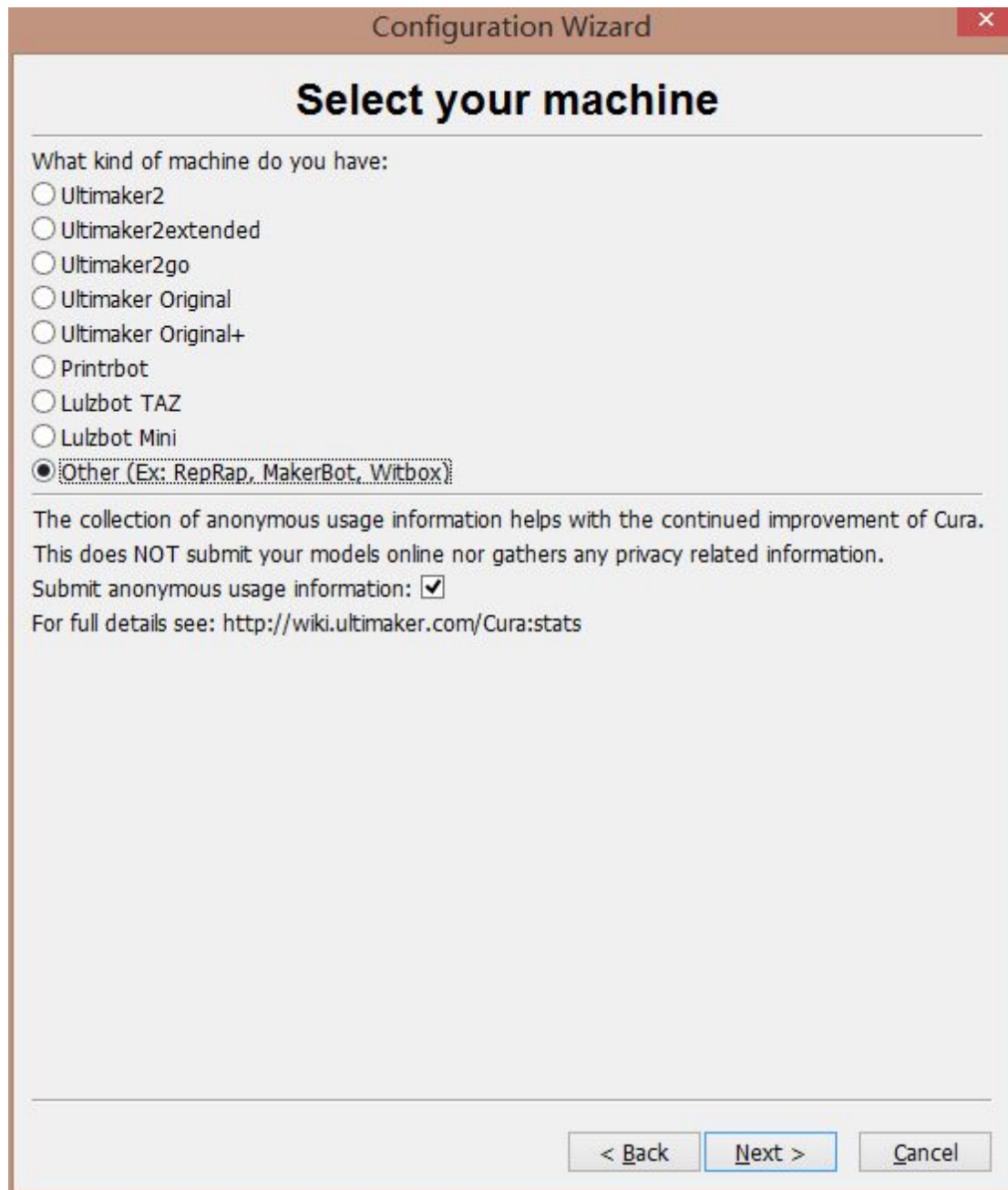
## 安装完成



2.软件第一次运行时，先要设置机器



### 3. 机器类型选择“Other(Ex:RapRap, MakeBot, Witbox)”



The image shows a screenshot of the 'Configuration Wizard' dialog box in Cura. The title bar reads 'Configuration Wizard' with a close button on the right. The main heading is 'Select your machine'. Below this, the text asks 'What kind of machine do you have:'. There is a list of radio button options: 'Ultimaker2', 'Ultimaker2extended', 'Ultimaker2go', 'Ultimaker Original', 'Ultimaker Original+', 'Printrbot', 'Lulzbot TAZ', 'Lulzbot Mini', and 'Other (Ex: RepRap, MakerBot, Witbox)'. The 'Other' option is selected. Below the list, there is a paragraph of text: 'The collection of anonymous usage information helps with the continued improvement of Cura. This does NOT submit your models online nor gathers any privacy related information.' This is followed by a checked checkbox for 'Submit anonymous usage information:'. At the bottom, there is a URL: 'For full details see: <http://wiki.ultimaker.com/Cura:stats>'. At the bottom right, there are three buttons: '< Back', 'Next >', and 'Cancel'.

Configuration Wizard

## Select your machine

What kind of machine do you have:

- Ultimaker2
- Ultimaker2extended
- Ultimaker2go
- Ultimaker Original
- Ultimaker Original+
- Printrbot
- Lulzbot TAZ
- Lulzbot Mini
- Other (Ex: RepRap, MakerBot, Witbox)

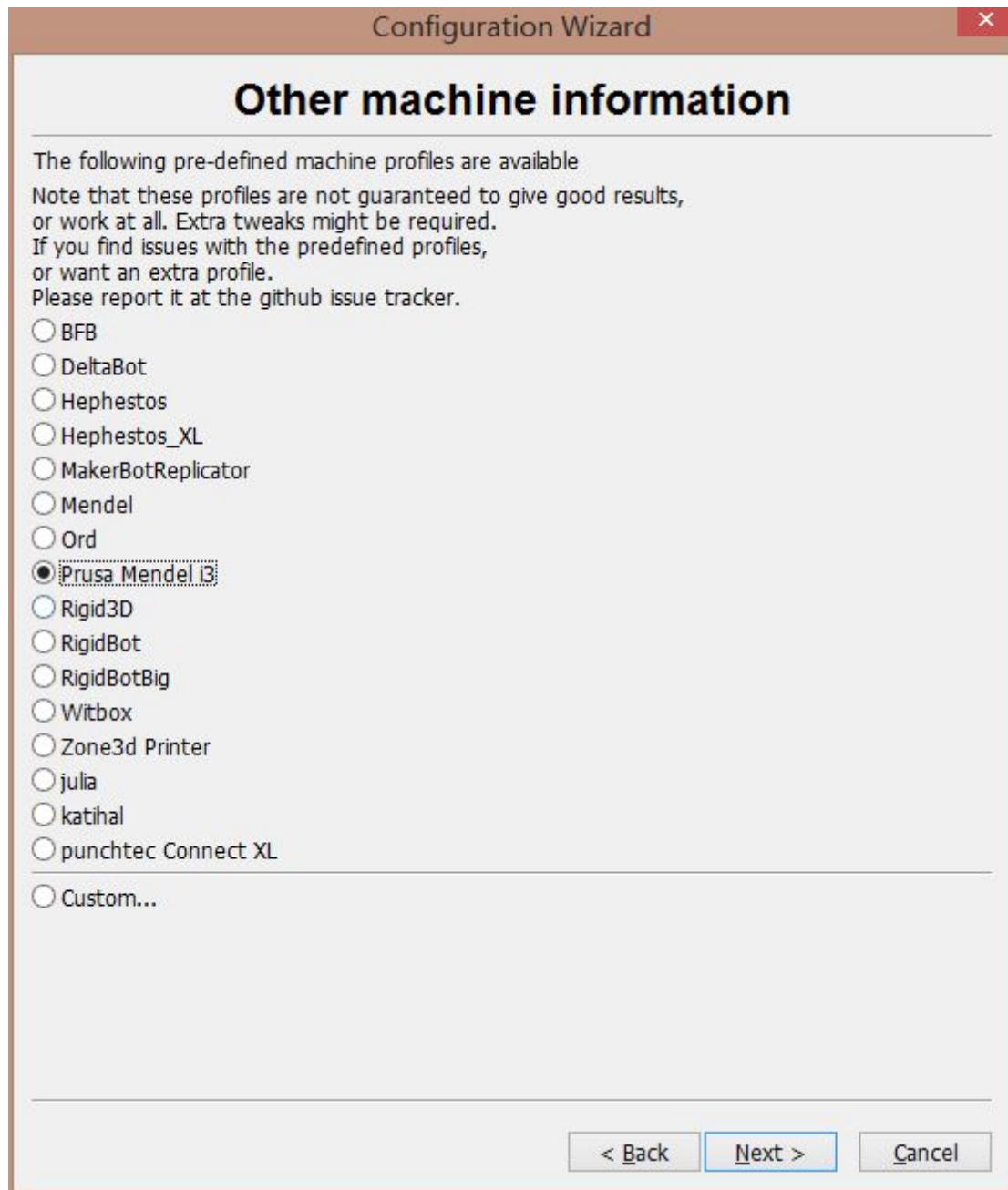
The collection of anonymous usage information helps with the continued improvement of Cura. This does NOT submit your models online nor gathers any privacy related information.

Submit anonymous usage information:

For full details see: <http://wiki.ultimaker.com/Cura:stats>

< Back   Next >   Cancel

#### 4. 机器类型选择“Prusa Mendel i3”



Configuration Wizard

## Other machine information

The following pre-defined machine profiles are available  
Note that these profiles are not guaranteed to give good results,  
or work at all. Extra tweaks might be required.  
If you find issues with the predefined profiles,  
or want an extra profile.  
Please report it at the github issue tracker.

- BFB
- DeltaBot
- Hephestos
- Hephestos\_XL
- MakerBotReplicator
- Mendel
- Ord
- Prusa Mendel i3
- Rigid3D
- RigidBot
- RigidBotBig
- Witbox
- Zone3d Printer
- julia
- katihal
- punchtec Connect XL

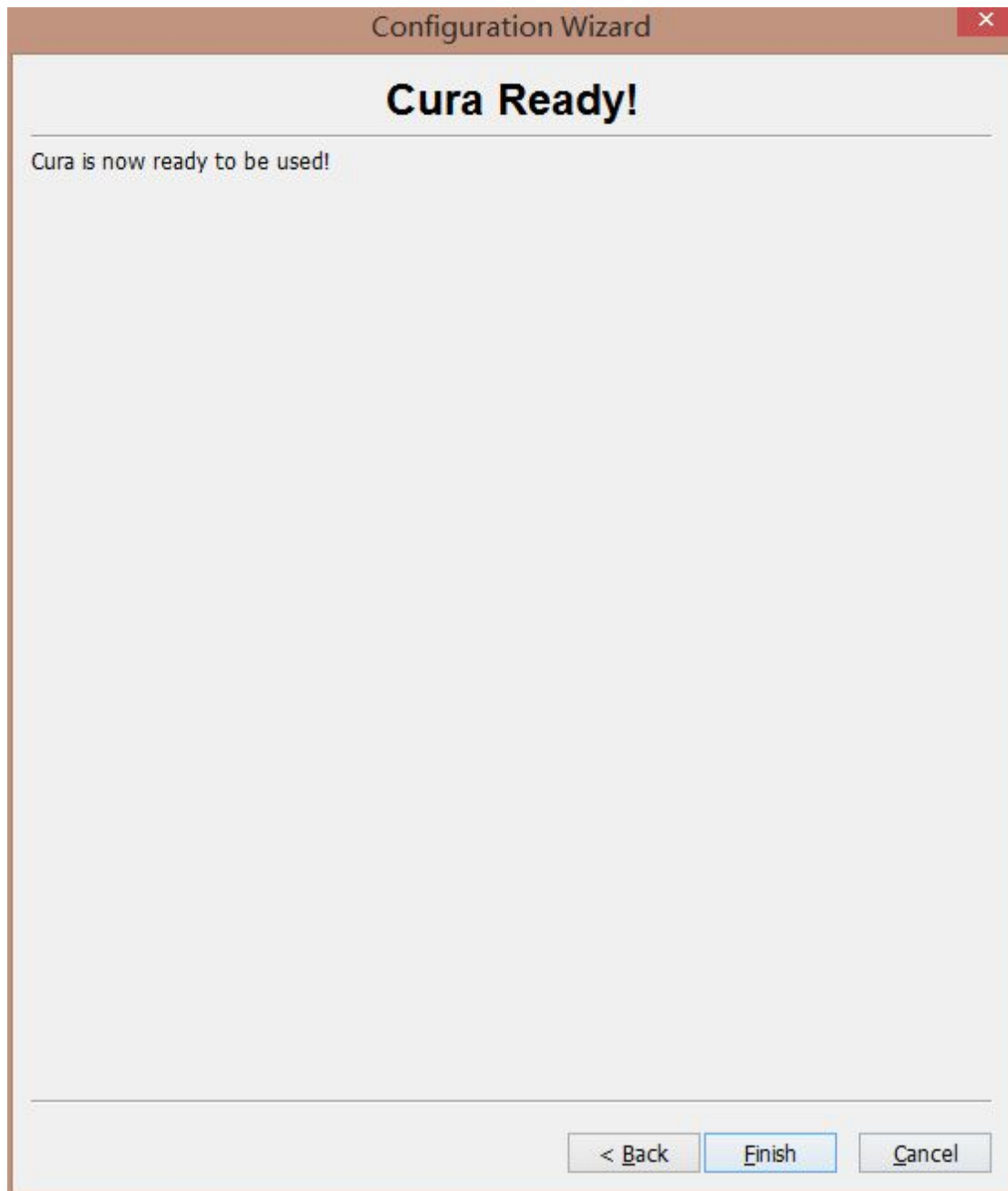
---

Custom...

---

< Back    Next >    Cancel

5. 点击“Finish”完成设置



## 6.修改 Basic 参数设置

Layer height(mm) : 层高, 打印时每一层的厚度, 数值越低, 精度越高, 数值为 0.1-0.4

Shell thickness : 外壳厚度为喷嘴直径的倍数, 推荐为 0.8

Bottom/Top thickness : 顶部和底部的厚度为层高(Layer height)的倍数, 推荐为 0.8-1

Fill Density(%) : 内部填充, 按需设置, 100%为实心, 0%为空心

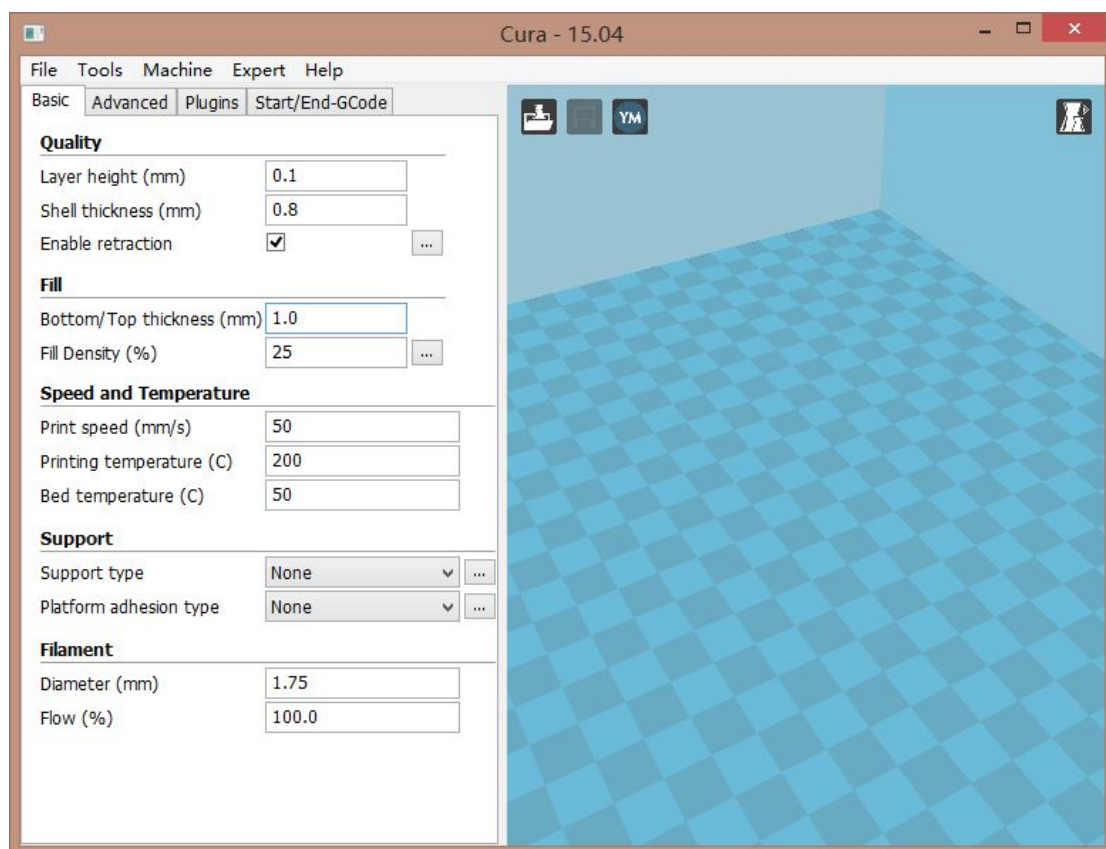
Print Speed(mm/s) : 打印速度, 一般 50

Printing temperature(C) : 喷嘴温度, PLA 一般为 195

Bed temperatura(C) : 热床温度, 一般 30-50

Filament

Diameter(mm) : 打印材料的直径, 修改为 1.75



## 7.修改 Advanced 参数

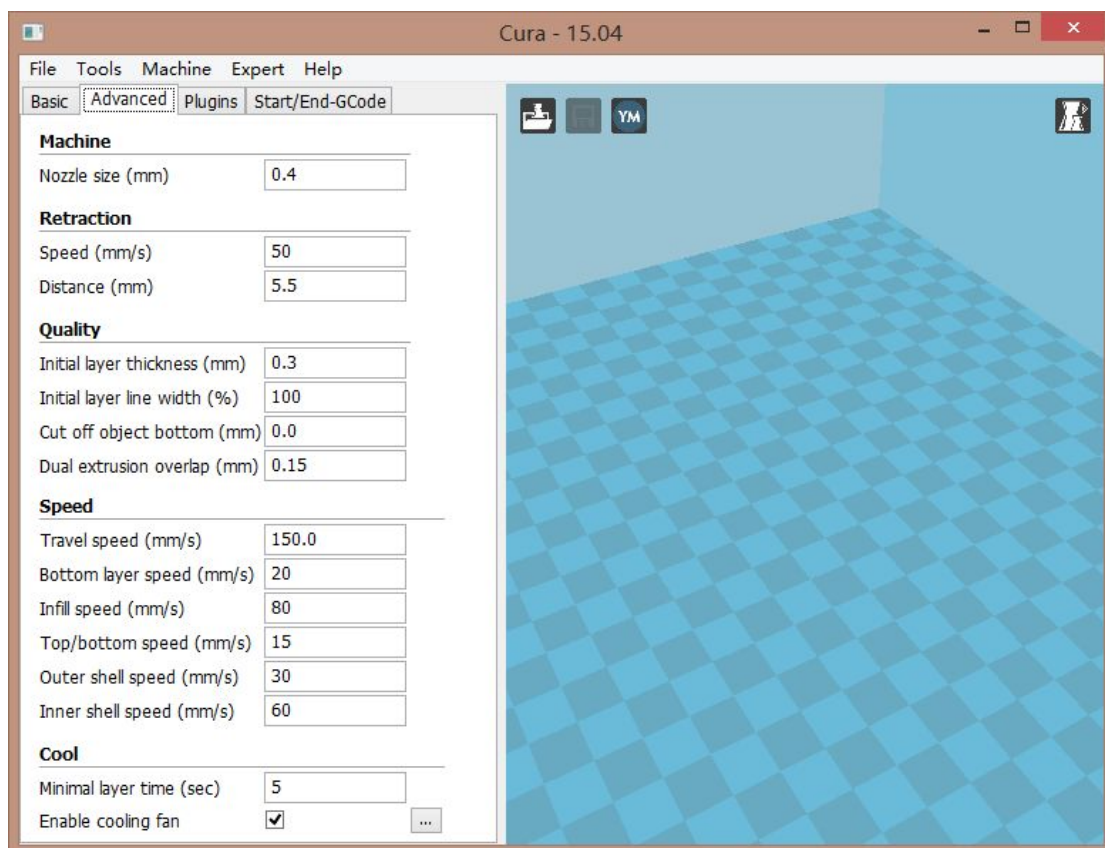
Nozzle Size : 喷嘴直径, 改为 0.4

Retraction

Speed ( mm/s ) :回抽速度,改为 50

Distance ( mm ) :回抽长度, 改为 5.5

其它不用修改



## 8. File 下拉菜单的 Machine settings 设置

Maximum width(mm)最大宽度(X 轴) : 230mm , S1 机型为 280mm

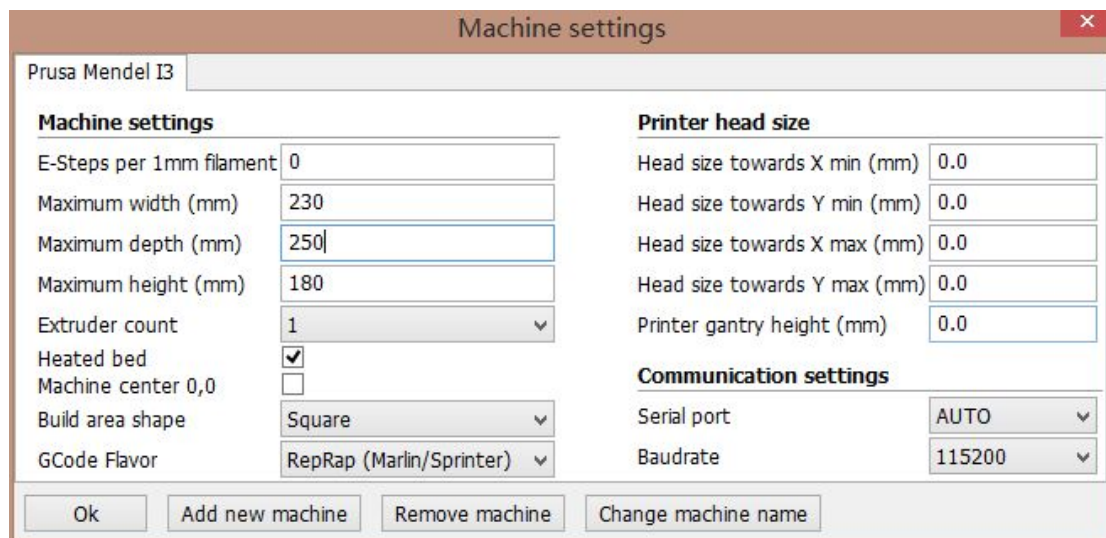
Maximum depth(mm)最大宽度(Y 轴) : 250mm , S1 机型为 190

Maximum height(mm)最大宽度(Z 轴) : 180mm , S1 机型为 200

Serial port 端口 : 不能设置 Auto , 需要自行选择正确的端口号

Baudrate 比特率 : 115200

设置完成后 , 点击弹出窗口左下角的“OK”。为保证软件能够识别到打印机 , 设置完后 , 需要先关闭 Cura 软件 , 再重新打开。



## 9. Tools 下拉菜单中 , 选 Print one at a time

